



# **Walking and Parking in Work Zones**

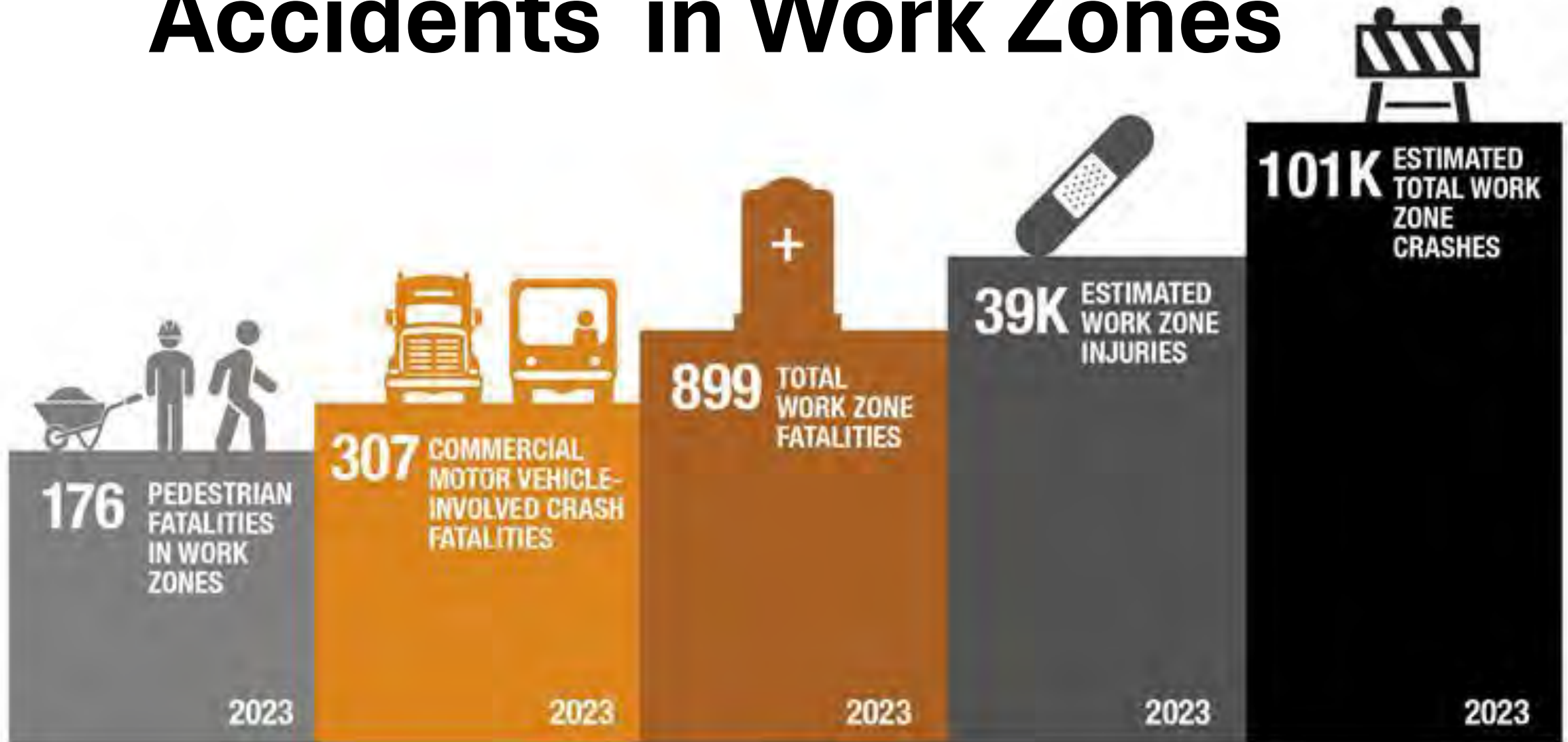
**Regional Technical Meetings  
March 2026**



# Overview

- **To park or not to park...**
- **Walk this way ...**
- **Don't be a bad spotter...**

# Accidents in Work Zones



# Who is at risk?

891

742

145

4



**Total Fatalities FY 2022**

**Drivers and passengers**

**Bicyclists and persons on foot**

**Others**

Unknown occupant types of a motor vehicle in transport, occupants of a motor vehicle not in transport, and persons on personal conveyances.

# What's the cause?

**21%**

- Involving a Rear-End Collision

**30%**

- Involving a CMV

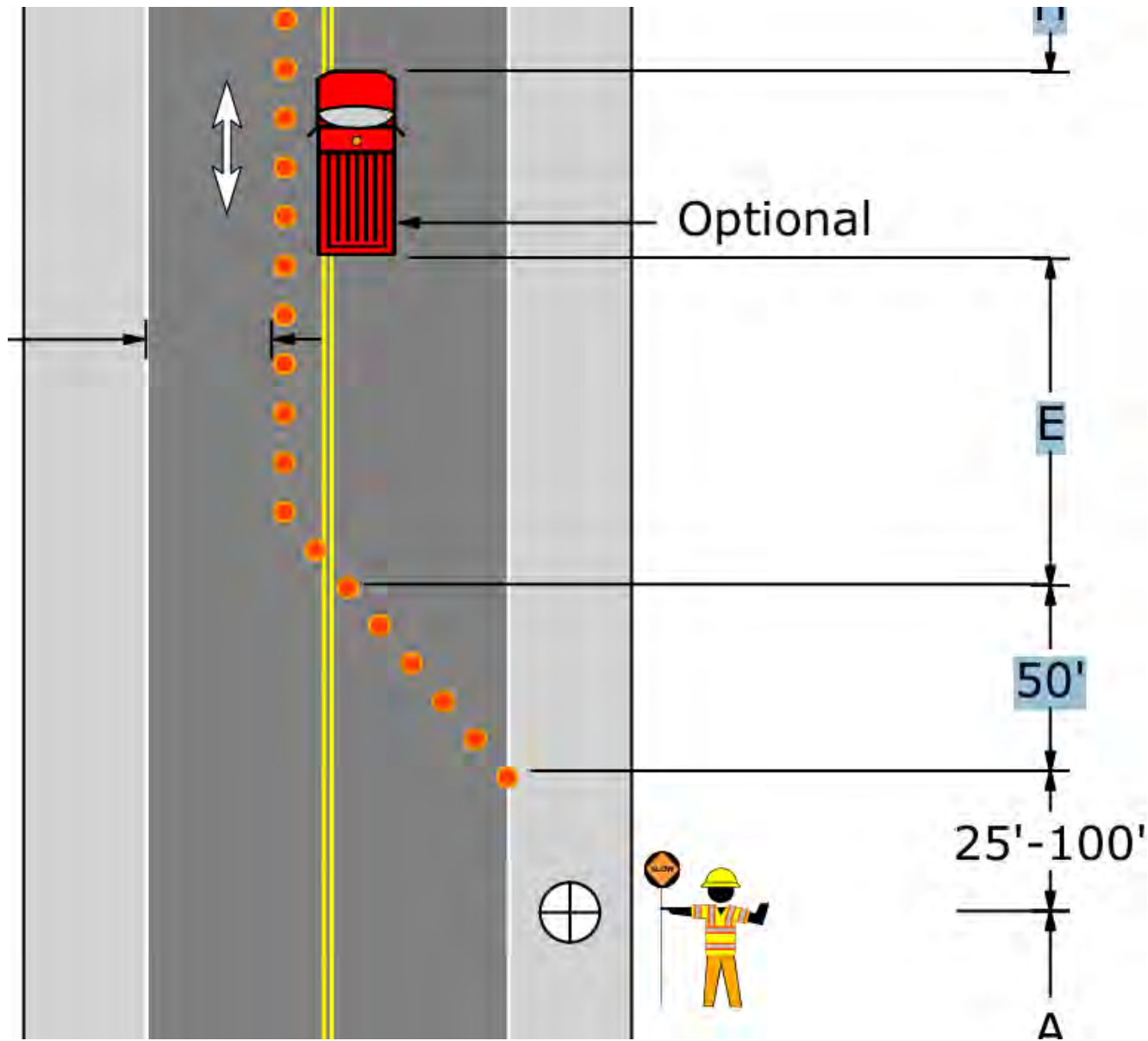
**34%**

- Where Speeding Was a Factor

**Anything  
in the  
taper is  
likely to  
get hit.**







Speed	Buffer Space
S (MPH)	E (Feet)
25	155
30	200
35	250
40	305
45	360
50	425
55	495

# Crash Trucks





# Don't

- Be in the taper
- Be in the buffer space
- Be on the road before a crash truck

**Don't cross .....**

# High Speed Traffic



# Risk of death if hit by a car...

**25**  
MPH



**10%** RISK OF DEATH

**45**  
MPH



**70%** RISK OF DEATH

**55**  
MPH

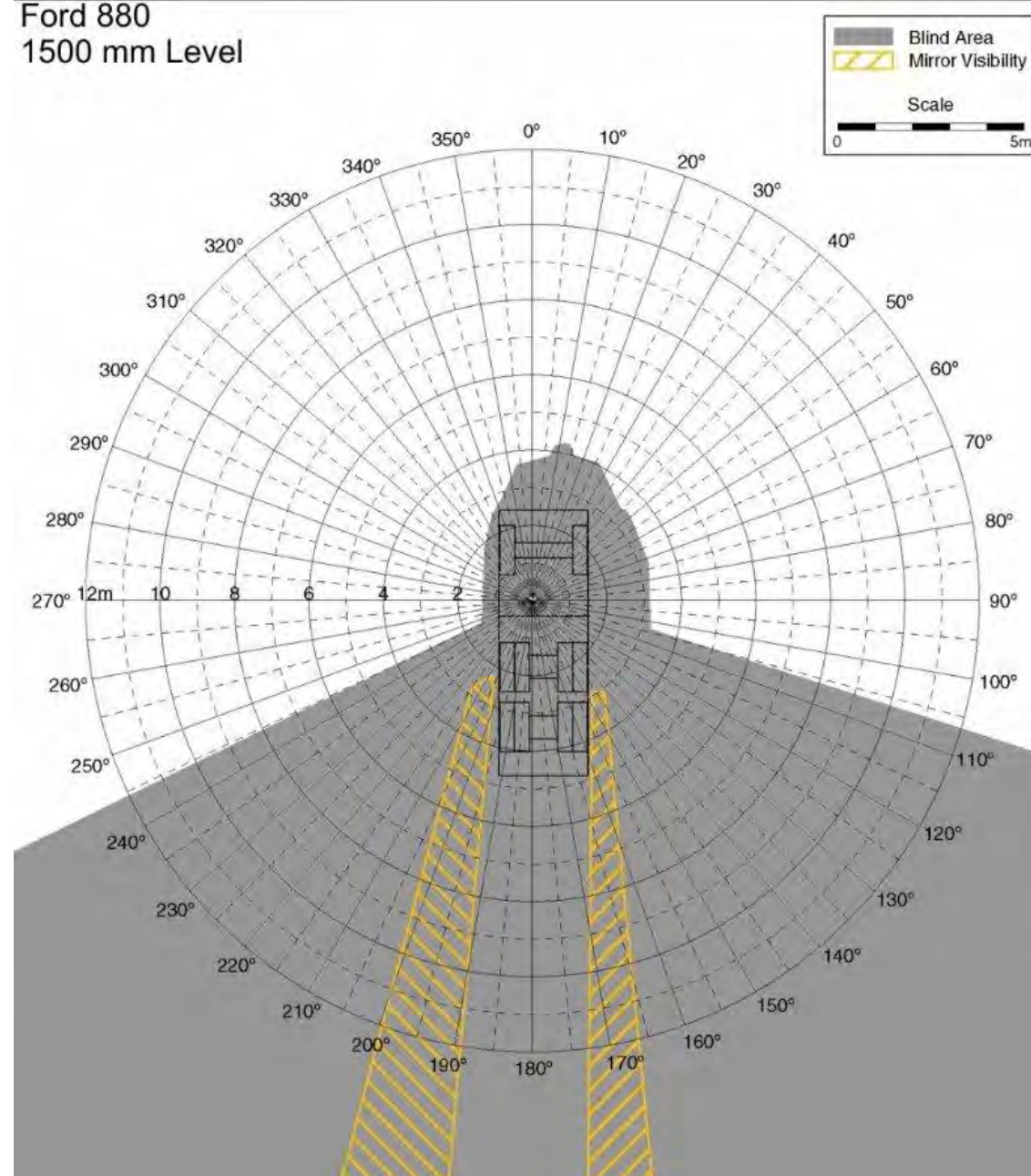


**90%** RISK OF DEATH

# Blind Spots

- The area around vehicles and equipment that is not visible to the operator with direct line of sight or while using mirrors
- Blind spots are specific to each vehicle or piece of equipment
- Workers should be aware of blind spots
- NIOSH Equipment Blind Spots Guides are available on the CDC's website and are a great resource
- Special consideration for brooms and skid steers
- Discuss blind spots and spotter locations with operators and drivers

Ford 880  
1500 mm Level



# No Walk Zones





**No Walk Zones**





# Don't Park . . .

**... in buffer space**

**... on wrong side of crash truck**

**... where the work is going to be happening**

**... too close**

**... where you will be crossing high speed traffic**

# PARK SMARTER:

## »» *First Move Forward*

Construction sites can be very busy with many vehicles, equipment and workers trying to operate or work in the same area which greatly increases the chance of a vehicle accident. By practicing "*First Move Forward*", efficiency will be increased, and the chance of an accident will be greatly reduced.

## » INCORRECT - Backing Out of a Parking Space

When your first move is reverse, you have to contend with blind spots and there are many hazards such as equipment, vehicles or coworkers that may not be seen.



# Spotters

**Not a group activity**

**Identify the spotter**

**Spotting at night**

**When do you need a spotter?**



# What should you do in this situation?

- Remain in the cab
- Keep others clear
- Call 911

[https://www.youtube.com/shorts/r\\_3\\_874nnHI?feature=share](https://www.youtube.com/shorts/r_3_874nnHI?feature=share)



# 2026 National Work Zone Awareness Week

**SAFE  
ACTIONS  
SAVE LIVES**



# 2026 National Work Zone Awareness Week



April 20 - 24

Mon- Safety Training Day

Tues- Kickoff

Wed- Go **Orange** Day

Thurs- Social media storm

Fri- Moment of Silence