

# Asphalt Pavement Alliance

January 28-30, 2019

PENNSYLVANIA



PAPA's 59th Annual Conference

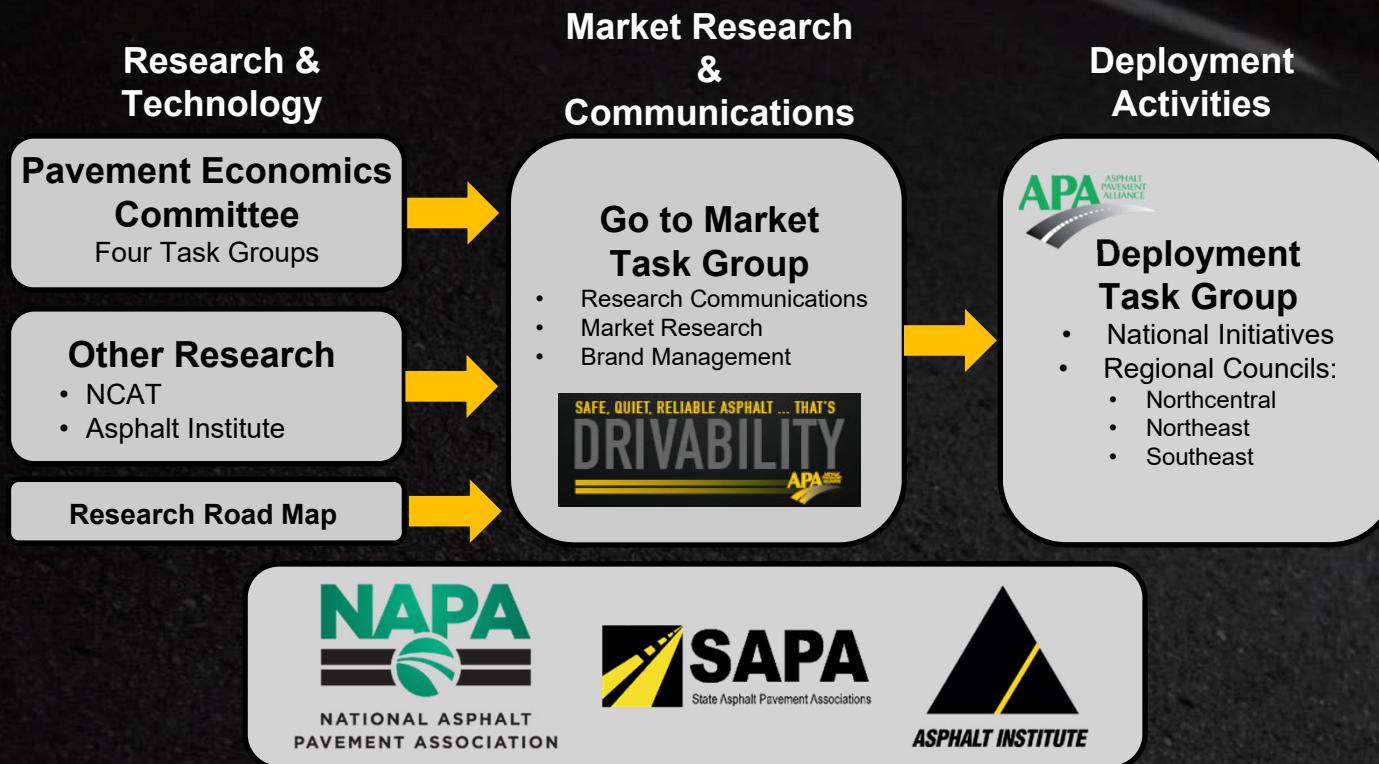
*The Hotel Hershey®*

Amy Miller, P.E.



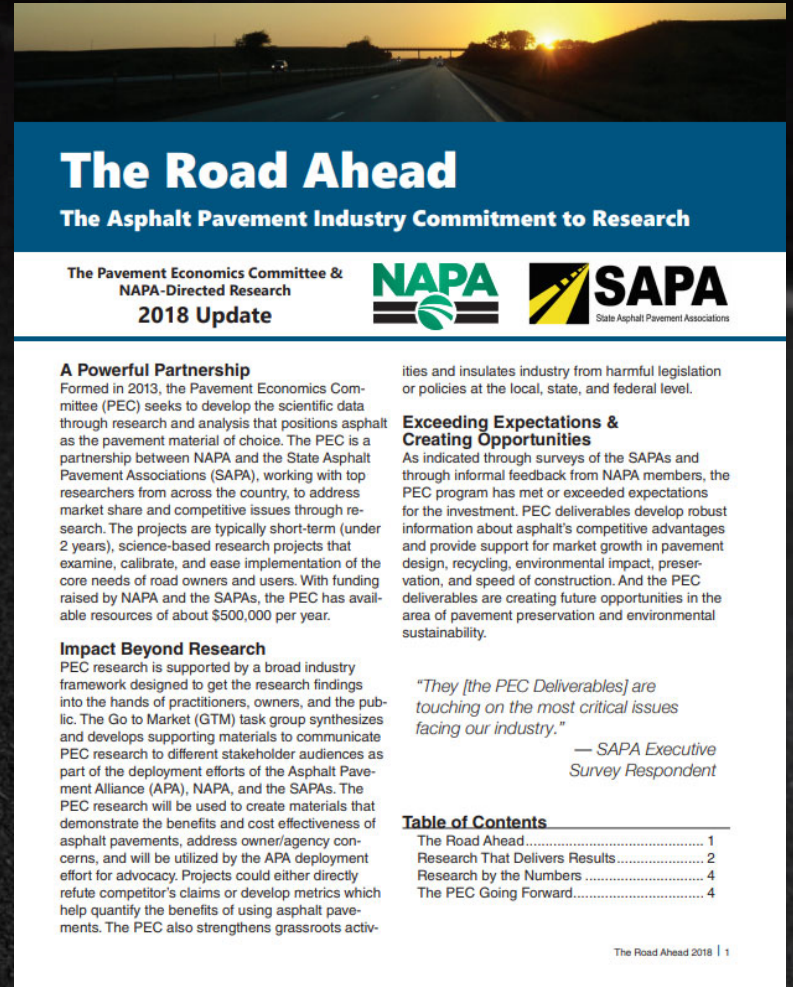
Pennsylvania Asphalt  
Pavement Association  
Pennsylvania Rides on Us.







- **Financial status**
  - \$2.8 Million Approved
  - \$2.2 Million Spent
  - 34 SAPAs Supported in 2018
- **Deliverables status**
  - 45 Projects Total
  - 35 Projects are Complete or Near Completion



## The Road Ahead

The Asphalt Pavement Industry Commitment to Research

The Pavement Economics Committee & NAPA-Directed Research  
2018 Update

**NAPA**  
National Asphalt Pavement Association

**SAPA**  
State Asphalt Pavement Associations

**A Powerful Partnership**  
Formed in 2013, the Pavement Economics Committee (PEC) seeks to develop the scientific data through research and analysis that positions asphalt as the pavement material of choice. The PEC is a partnership between NAPA and the State Asphalt Pavement Associations (SAPA), working with top researchers from across the country, to address market share and competitive issues through research. The projects are typically short-term (under 2 years), science-based research projects that examine, calibrate, and ease implementation of the core needs of road owners and users. With funding raised by NAPA and the SAPAs, the PEC has available resources of about \$500,000 per year.

**Impact Beyond Research**  
PEC research is supported by a broad industry framework designed to get the research findings into the hands of practitioners, owners, and the public. The Go to Market (GTM) task group synthesizes and develops supporting materials to communicate PEC research to different stakeholder audiences as part of the deployment efforts of the Asphalt Pavement Alliance (APA), NAPA, and the SAPAs. The PEC research will be used to create materials that demonstrate the benefits and cost effectiveness of asphalt pavements, address owner/agency concerns, and will be utilized by the APA deployment effort for advocacy. Projects could either directly refute competitor's claims or develop metrics which help quantify the benefits of using asphalt pavements. The PEC also strengthens grassroots activities and insulates industry from harmful legislation or policies at the local, state, and federal level.

**Exceeding Expectations & Creating Opportunities**  
As indicated through surveys of the SAPAs and through informal feedback from NAPA members, the PEC program has met or exceeded expectations for the investment. PEC deliverables develop robust information about asphalt's competitive advantages and provide support for market growth in pavement design, recycling, environmental impact, preservation, and speed of construction. And the PEC deliverables are creating future opportunities in the area of pavement preservation and environmental sustainability.

*"They [the PEC Deliverables] are touching on the most critical issues facing our industry."*  
— SAPA Executive Survey Respondent

**Table of Contents**

The Road Ahead.....	1
Research That Delivers Results.....	2
Research by the Numbers .....	4
The PEC Going Forward.....	4

The Road Ahead 2018 | 1

# Pavement Economics Committee





**Mixture Quality  
& Performance**



**Life-Cycle Cost  
Analysis**



**Legislative**



**Life Cycle  
Assessment**

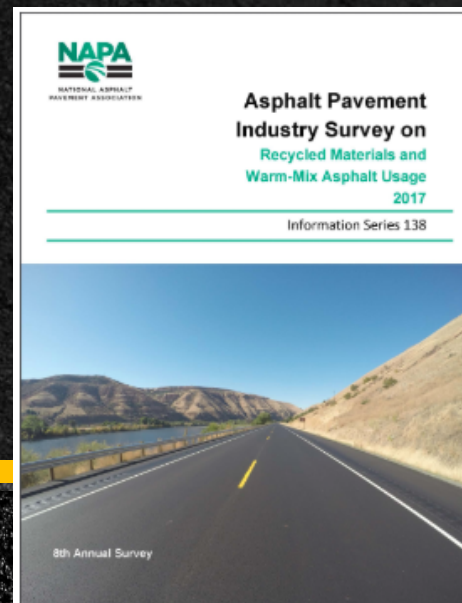
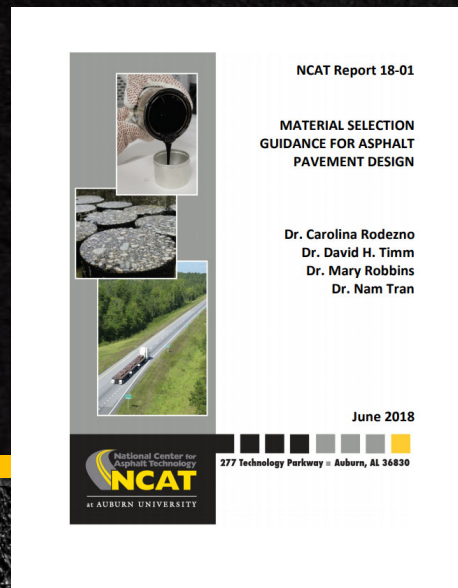


**Task Groups**



## Key Research

- **LCCA Guidance Report** (Under FHWA Review)
- **Optimizing Flexible Pavement Design Project** ([www.ncat.us](http://www.ncat.us))
- **Thinlay Guidance Document** ([www.ThinlayAsphalt.com](http://www.ThinlayAsphalt.com))
- **2017 RAP, RAS, WMA Survey** ([www.asphaltpavement.org/recycling](http://www.asphaltpavement.org/recycling))
- **Effects of Asphalt and Concrete Pavement Rehabilitation on Users and Businesses During Construction**  
(<https://www.eng.auburn.edu/civil/research/>)



# The Science: Pavement Economics Committee





..... How Does It  
Work?

**Pavement Economics**  
to  
**Go to Market**  
to  
**APA Deployment**







# Preservation for the LONG HAUL

**THINLAY**  
SAFE. SMOOTH. DURABLE.

**NAPA**  
NATIONAL ASPHALT  
PAVEMENT ASSOCIATION

[www.ThinlayAsphalt.com](http://www.ThinlayAsphalt.com)



Versatile

# THIN IS IN

**think** (thɪŋk) ► **v.** **thought** (θɒt), **think•ing**  
1. To have or formulate in the mind. 2a. To ponder. **b.** To reason. 3. To believe; suppose. 4. To call to mind; remember. 5. To visualize;  
**Thinlay** (thɪlə) ► **n.** A pavement preservation treatment using asphalt pavement mixture applied as thin as 1/8 of an inch and designed to extend service life, provide long-lasting smoothness, and increase structural capacity.  
**thin•ner** (thɪn'ər) ► **n.** A liquid, as turpentine, mixed with paint to reduce viscosity.  
**thin-skinned** (thɪn'skɪnd') ► **adj.** 1. Having a thin rind or skin. 2. Oversensitive.

this is use  
We have r  
See Usage  
**this•tle** (tɪ  
plants hav  
purplish fl  
**this•tle•d**  
down attac  
**thith•er** (tɪ  
that place;  
tant side; f  
**thole pin**  
gunwales  
OE *thol*.)



[www.ThinlayAsphalt.com](http://www.ThinlayAsphalt.com)

**NAPA**  
NATIONAL ASPHALT  
PAVEMENT ASSOCIATION

# GTM and Thinlay



# THINLAY

SAFE. SMOOTH. DURABLE.

## Toolkit

### Table of Contents

Thinlay Overview	3
Trade Show Materials	4
Banner Ups	4
Promotional Cards and Flyers	8
Marketing Tools	11
Logo	11
Ads	12
Postcards	15
Brochures	16
Infographic	22
Videos	23
Social Media	24
Website Promotion	26
Resource Website	27
PowerPoint Presentations	28

1



## Thinlay Overview

With limited funding and aging roads, agencies need cost-effective, long-lasting pavement preservation techniques. Thinlays are a suite of asphalt overlays that are developed for pavement preservation using proven pavement design principles. Early Thinlays have performed for more than ten years, double the life expectancy of other pavement preservation options.

While Thinlays are not a cure for failed pavements, they do offer life extension to "good" or "fair" pavements. Designers and road owners should be aware of best opportunities to employ Thinlays, how to design and specify, best practices for construction and quality control along with performance measures. The material referenced within this document is a culmination of information from around the industry that will aid in the proper education of Thinlay application. The intended audience of this material is engineers and road owners.

3

## Promotional Cards and Flyers

Promotional cards and flyers are an easy to distribute, cost effective medium that conveys customized information to an intended audience. Consider using these cards and flyers at industry events, trade show booths, in mailings, or as flyers around your office lobby to educate stakeholders about the benefits of Thinlay.

1. New Jersey Asphalt Pavement Association (NJAPA) has faced intense competition from other pavement preservation techniques. So NJAPA produced an arsenal of products, including this flyer citing the benefits of Thinlays. This can be customized to use in other states at events focused on road owners making pavement preservation decisions.



## Benefits of Thinlay

WHEN IT COMES TO PAVEMENT PRESERVATION, THE CHOICE IS YOURS.

Thinlay<sup>TM</sup> including Ultra Thin Friction Course and High Performance Thin Overlay.

- Lowest overall annual cost
- Quieter ride for drivers and the neighborhood
- Smoother roads and better rideability
- Improved safety from corrected surface irregularities and better skid resistance
- 100% Recycled/Regradable materials for environmental sustainability

Major Surfing and Slurry Seals

- Higher annual cost
- Rougher and louder ride
- Needs expensive, specialized equipment to install
- Does not correct surface irregularities
- Requires aggregate from new sources - not recycled material

NJAPA.COM

5

Contact: Charlie Goodhart  
& Gary Hoffman

# Deployment and Thinlay



# Commercial Markets Course




Join us  
April 10-11, 2019

## Commercial and Industrial Parking Lot Training

### SCHEDULE

#### Wednesday, April 10

8:00 am - Registration  
8:30 am - 4:30 pm - Training  
5:00 pm - 7:00 pm -  
Tour and Reception

  
Dinner,  
transportation,  
and beverages  
included with registration.

#### Thursday, April 11

8:00 am - 12:00 pm -  
Training

### COST

**\$350**  
\$425 after March 15, 2019

**Reserve  
Your Spot  
Space is  
Limited**

#### How to Build

Considerations  
for Constructing  
Quality Pavements

#### How to Maintain

Maximize the ROI  
of Your Pavement  
Investment

#### How to Rehabilitate

Proactive Pavement  
Rehabilitation Options

#### What Lies Ahead

The latest in Asphalt  
Technologies



Asphalt.

AMERICA RIDES ON US





A person wearing a high-visibility yellow-green vest over a black long-sleeved shirt and yellow work gloves is pointing their right index finger at a tablet computer held in their left hand. The background is dark and out of focus.

# PAVE<sup>x</sup>press

*An Easy-to-Use Pavement Design Tool*

[www.PAVEXpressDesign.com](http://www.PAVEXpressDesign.com)

# PAVE<sup>i</sup>nstruct

*A Pavement Design Instructional Tool*

[www.PAVEinstruct.com](http://www.PAVEinstruct.com)



# What Is PAVEXpress?

A free, online tool to help you create and evaluate pavement designs and overlays using key engineering inputs, based on the AASHTO 1993 and 1998 supplement pavement design process.

- **Free** - no cost to use
- **Accessible** - via the web and mobile
- **Standards Based** - AASHTO and/or industry standard practices
- **User-friendly** - streamlined user interface and user experience
- **Collaborative** - share, save, and print
- **Interactive** - help and resources





# PAVEXpressDesign.com

## THIRD PARTY VERIFIED

**PAVE Xpress**  
*is equal to*  
**AASHTO '93/'98**

3rd party verified!

Learn More Here

**MISSING DARWIN?**

**PAVE Xpress** will fill your void!

Third-party verified to AASHTO '93/'98 design standards

Learn More Here

Asphalt.

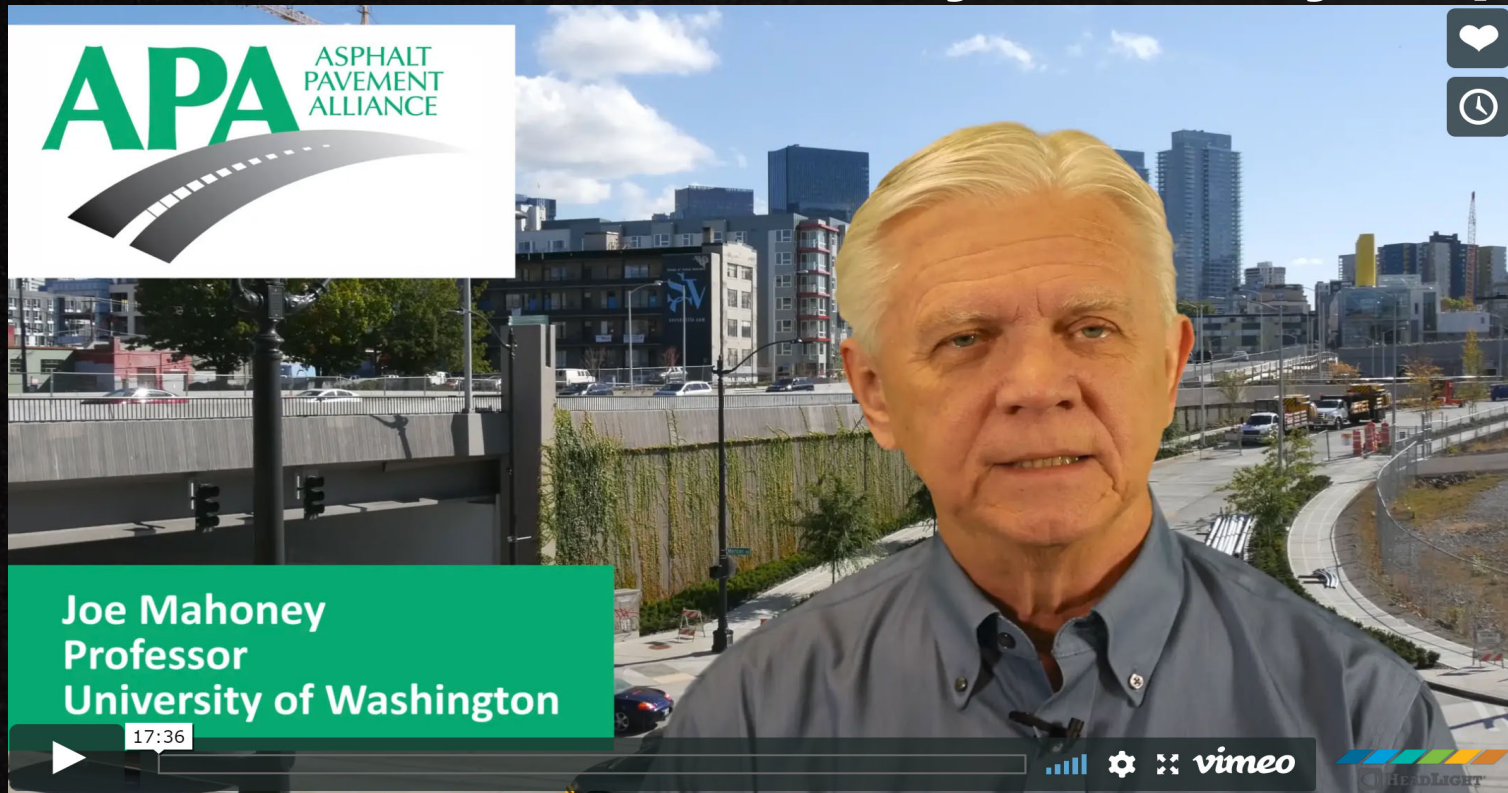
AMERICA RIDES ON US





# PAVEInstruct.com

## Helpful on-line instruction by industry experts



14

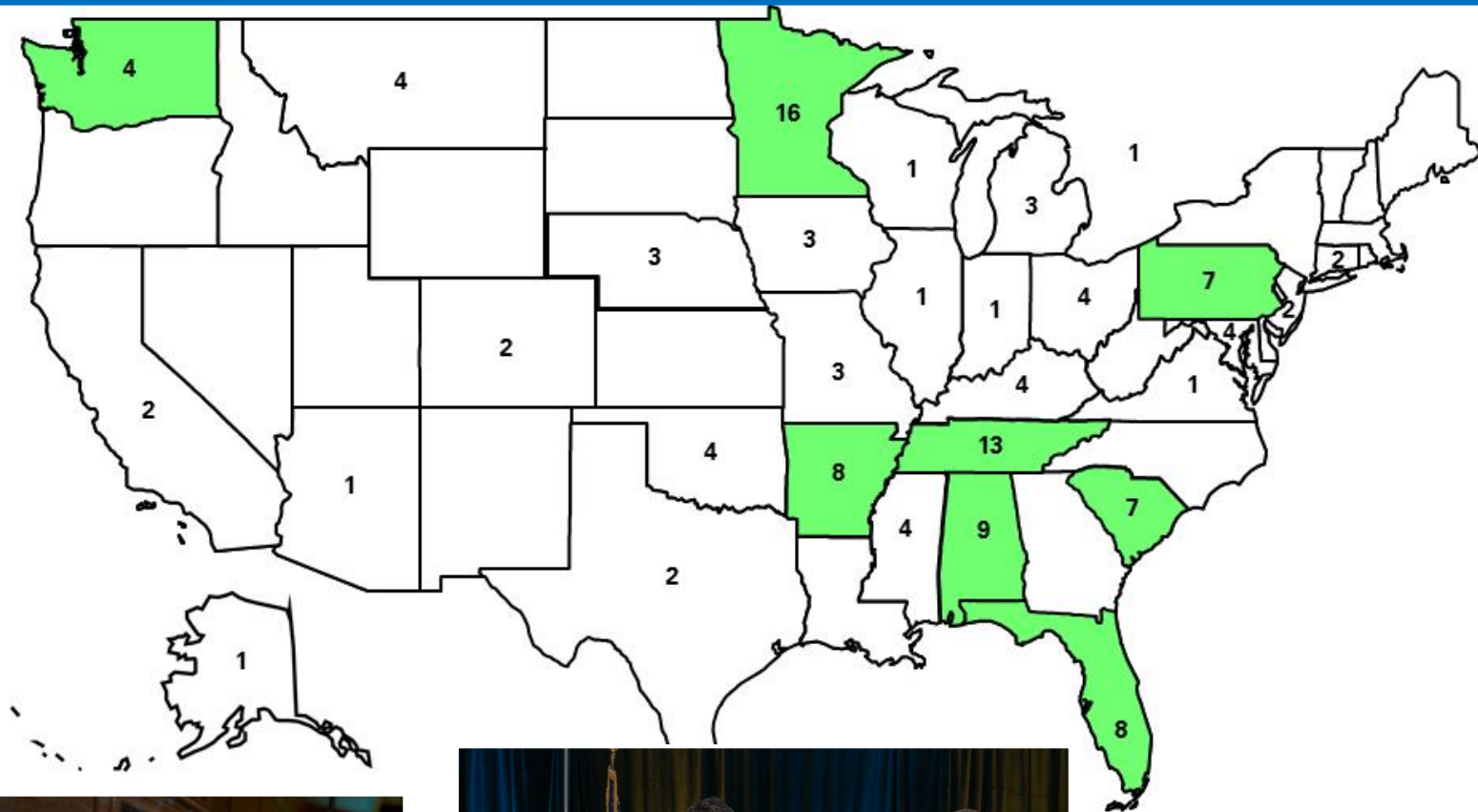
Asphalt.

AMERICA RIDES ON US





# Perpetual Pavement Awards



Asp





# NE Collegiate Asphalt Mix Design Competition



## Participating Colleges:

Univ of New Hampshire  
Alfred State  
Columbia Univ  
Manhattan College  
Penn State  
Rowan Univ  
Univ of Rhode Island

Asphalt.

AMERICA RIDES ON US

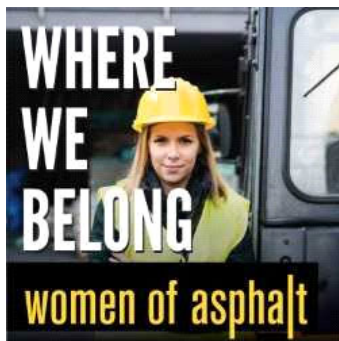




# women of asphalt

## WOMEN OF ASPHALT

WE LEAD AND INSPIRE WOMEN IN THE ASPHALT INDUSTRY



Women of Asphalt is a national coalition which supports women in all aspects of the asphalt industry through mentoring, education, and advocacy, and by encouraging women to seek careers in the asphalt industry.

**[www.womenofasphalt.org](http://www.womenofasphalt.org)**



(904) 446-0758 • 2233 Park Ave, Ste 200U • Orange Park, FL 32073 • [info@womenofasphalt.com](mailto:info@womenofasphalt.com)

Asphalt.

AMERICA RIDES ON US

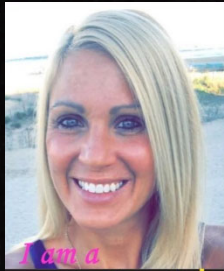




# *I am a* **woman of asphalt**

Countdown to World of Asphalt 2019

# PA



*I am a*  
**woman of asphalt**

**Danielle  
Arasin**  
Procurement  
Specialist  
Russell Standard  
Corporation



*I am a*  
**woman of asphalt**

**Madeline  
"Maddy"  
Goodhart**  
Lab Intern  
PennDOT Materials  
& Testing Lab



*I am a*  
**woman of asphalt**

**Sarah Hess**  
Asphalt Plant  
Operator  
HRI, Inc.



*I am a*  
**woman of asphalt**

**Tina  
Holtzman**  
Office Administrator  
PA Asphalt  
Pavement  
Association



*I am a*  
**woman of asphalt**

**Leslie Myers  
McCarthy,  
PhD**  
Associate  
Professor  
Villanova University



*I am a*  
**woman of asphalt**

**Abigail  
Steele**  
Senior Quality  
Control Technician  
Lane  
Construction/Eurovi  
a



*I am a*  
**woman of asphalt**

**Heather  
Warner**  
Quality Control  
Foreman  
Allan Myers

**Asphalt.**

AMERICA RIDES ON US





# THANK YOU!

## ASPHALT SOWS THE SEEDS FOR A SUSTAINABLE FUTURE



Asphalt pavements are 100 percent recyclable — in fact, they're the most recycled material in America. Every time an asphalt pavement is recycled, it diverts waste and other byproducts away from landfills, conserving natural resources. This means every asphalt pavement contains the seeds of the next generation of roads.

WHEN IT COMES TO **SUSTAINABILITY** ASPHALT PERFORMS



Asphalt.

AMERICA RIDES ON

