



***Engineered Innovation.***

*Engineered Innovation.*



# Weiler Facility

- Started with 40,000 sq. ft
- Added 20,000 sq. ft. in 2008
- Added 20,000 sq. ft. in 2009
- Purchased surrounding 30 acres in 2010
- Added 80,000 sq. ft. in 2011
- Added office building in 2012
- Added 140,000 sq. ft. in 2015
- Office expansion in 2017



*Engineered Innovation.*







## ***E2850B Remixing Transfer Vehicle***

*Engineered Innovation.*







## ***E1650 Remixing Transfer Vehicle***

*Engineered Innovation.*







## ***E1250B Remixing Transfer Vehicle***

*Engineered Innovation.*



# E2850B/E1650/E1250B Remixing Transfer Vehicle Elevator

- Variable Speed
- 1,000 TPH (907 MTPH) capacity
- 58" x 7" x .625" (147 cm x 18 cm x 1.6 cm) slats



WEILER INNOVATION

Engineered Innovation.





# E2850B/E1650/E1250B Remixing Transfer Vehicle

## Elevator Clean-Out

- Full-width drop down floor
- Simplified clean-out
- Chain inspection



WEILER INNOVATION

Engineered Innovation.



# E2850B/E1650/E1250B Remixing Transfer Vehicle

## Head Shaft

- Solid, one-piece machined head shaft
- Eliminates fatigue found at weld joints
- 24 bolts provide superior clamp load to hold sprockets in place



WEILER INNOVATION

*Engineered Innovation.*





# E2850B/E1650/E1250B Remixing Transfer Vehicle

## Drive Motors

- High-torque, direct-drive motors.
- Loop flush return system provides thermal relief
- Maximizes hydraulic efficiencies
- Extends seal life



WEILER INNOVATION

*Engineered Innovation.*



# E2850B/E1650/E1250B Remixing Transfer Vehicle

## Dump Assist

- Hydraulic moving floor assists in cleaning last remaining material from the truck





# E2850B/E1650/E1250B Remixing Transfer Vehicle

## Auto Dump

- One button push auto raises dump hopper while raising baffle
- Push button again to lower dump hopper and return baffle to operating position
- Dump speed is in relation to chain speed. Auto dump will pause if chain stops.



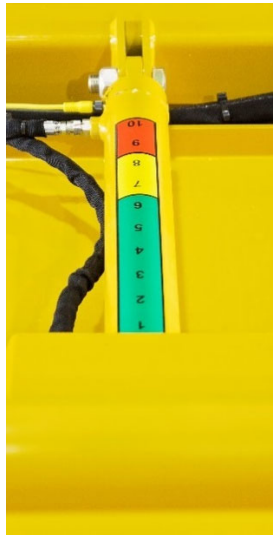
*Engineered Innovation.*



# E2850B/E1650/E1250B Remixing Transfer Vehicle

## Baffle

- Hydraulic baffle controls the flow of material into the elevator
- Decal to indicate optimal operating position





# E2850B/E1650/E1250B Remixing Transfer Vehicle

## Split Foot Shaft

- Split foot shaft
- Separated center bearings for simplified service
- Protected, remote grease lines



WEILER INNOVATION

Engineered Innovation.



# E2850B/E1650/E1250B Remixing Transfer Vehicle

## Cast Augers

- 22" heavy-duty cast augers
- 1.25" thick
- Bolt protection
- Small replaceable segments for less cost per ton
- Replaceable leading edge helps clean high buildup corners



*Engineered Innovation.*





# E2850B Remixing Transfer Vehicle

## Castor Wheels

- 18" (46 cm) self-cleaning castor wheels maximize weight distribution
- Machined castor designed for the application
- Serviceable bearings



# E2850B/E1650/E1250B Remixing Transfer Vehicle

## Full-Width Clean-Out Door

- Full-width hydraulic clean-out door allows full access to augers
- Simplifies clean-out process
- Reduces wear on corner augers



WEILER INNOVATION

Engineered Innovation.





# E2850B/E1650 Remixing Transfer Vehicle

## Push Roller

- Hydraulically extendable
- Oscillating
- Strengthened integrated scrapers
- Easy-to-remove rollers
- Rounded design for smooth truck exchanges



# E2850B Remixing Transfer Vehicle

## Dual-Side Control Panels

- Front hopper control panels located on both sides of machine
- Allow operator complete control of dump hopper and elevator
- Push pad button controls for main functions



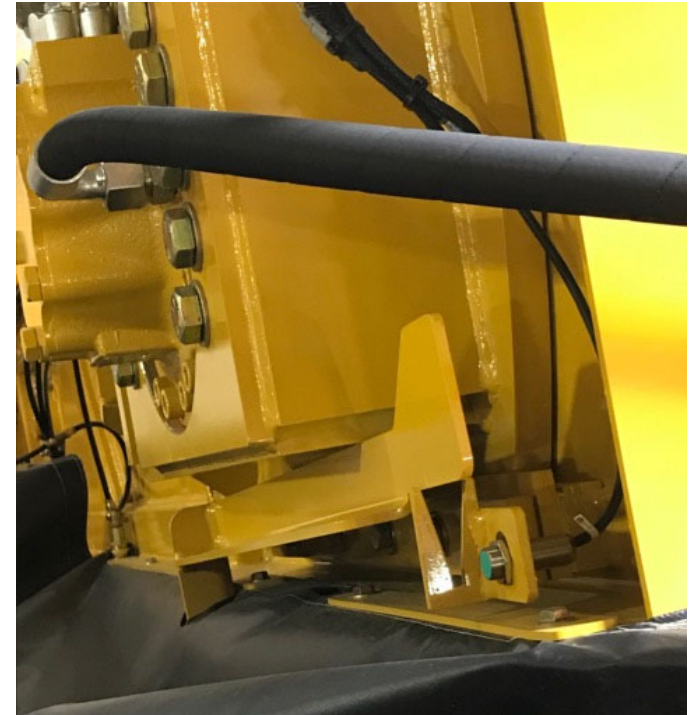
*Engineered Innovation.*



# E2850B/E1650 Remixing Transfer Vehicle

## Elevator Raise Disable

- Sensor will not allow elevator to raise if it interferes with the pile in the storage hopper
- Prevents damage to elevator

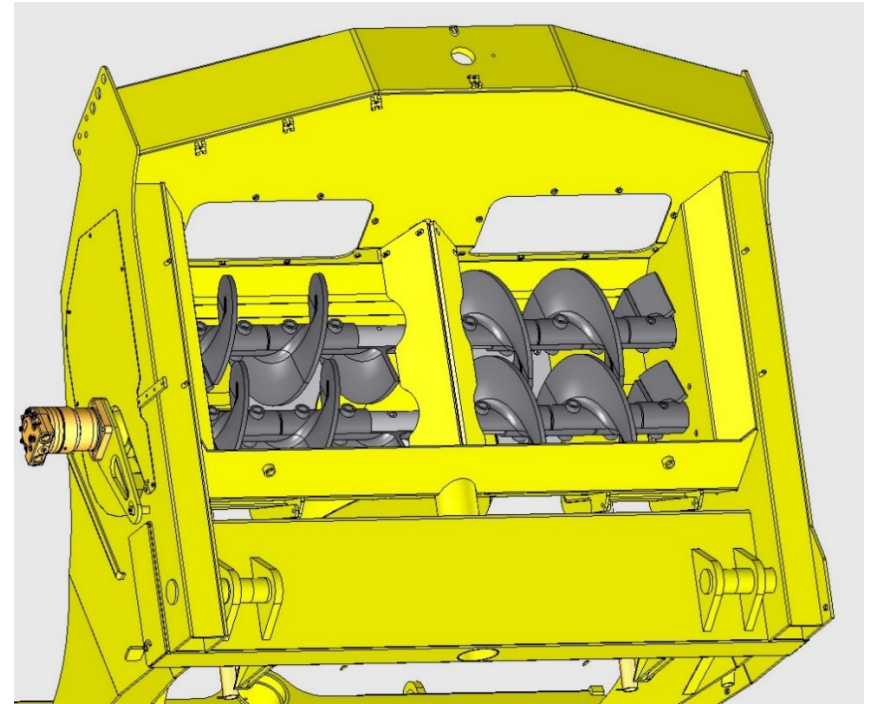




# E1250B Remixing Transfer Vehicle

## Remix Chamber

- Patented twin-interlaced auger system provides true remix
- Reduces particulate and thermal segregation
- Processes 600 tons-per-hour (544 MTPH)



WEILER INNOVATION

Engineered Innovation.



# E1250B Remixing Transfer Vehicle

## Effectiveness

Transfer/Remixing Device	Mean % Severe Thermal Segregation
No MTD/RTD	69.3%
Roadtec SB-2500	22.4%
Blaw-Knox MC-330	84.1%
Weiler E1250B	11.7%

\*From NCAT Thermal Segregation: Causes and Effects on In-Place Density and Fatigue Performance of Asphalt Mixtures Study (May 2012)

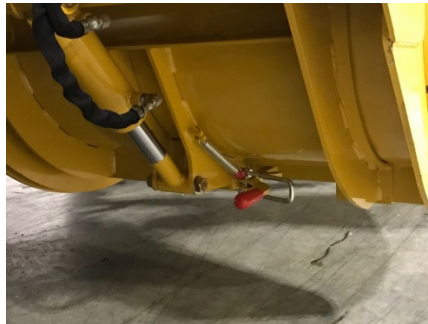
*Engineered Innovation.*



# E2850B/E1650 Remixing Transfer Vehicle

## Hopper Access

- 4 clam shell doors allow ground level access to hopper and remix augers for simplified service and clean-out
- One latch allows only the rear door or both doors to open with the same control lever

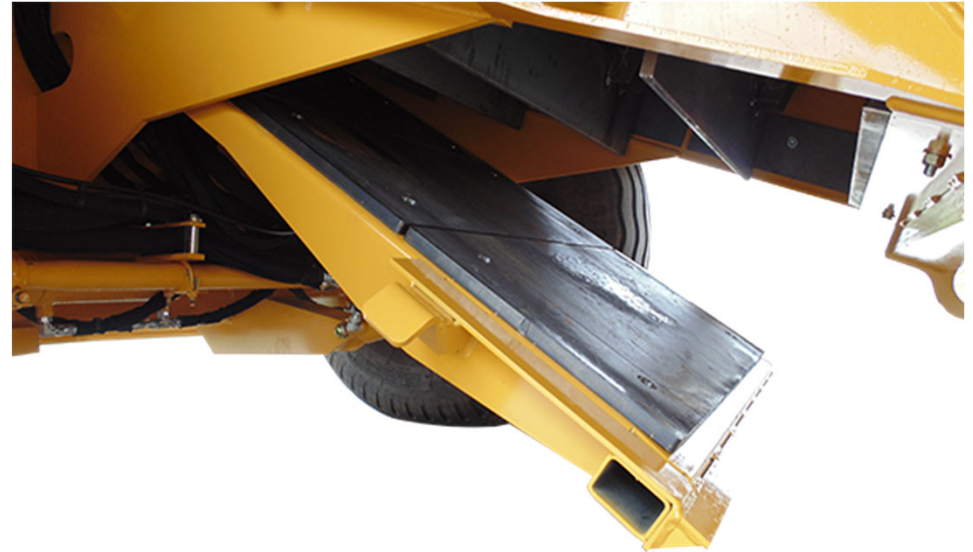




# E2850B/E1650 Remixing Transfer Vehicle

## Storage Elevator

- 600 TPH (544 MTPH) Capacity
- 35.25" x 7" x .625" (90 cm x 18 cm x 1.6 cm) slats
- Full-width, drop-down floor for simplified clean-out and chain inspection



# E2850B/E1650/E1250B Remixing Transfer Vehicle

## Conveyor

- 600 TPH (544 MTPH) Capacity
- 36" x 5" x .475" (76 cm x 13 cm x 1.2 cm) slats
- Wider conveyor reduces amount of material in sprockets
- Swings 55° in either direction for offset paving, 10'6" (3.2 m) outside of machine
- Capable of lifting hopper insert



WEILER INNOVATION

Engineered Innovation.



# E2850B/E1650/E1250B Remixing Transfer Vehicle Conveyor

- Insulation helps reduce build up in cooler temperatures



*Engineered Innovation.*





# E2850B/E1650/E1250B Remixing Transfer Vehicle

## Hydraulic Chain Tensioner

- Automatically sets proper chain tension every 40 hours of operation
- Keeps both sides of chain evenly tensioned
- Proper chain tension extends the life of wear components



WEILER INNOVATION

*Engineered Innovation.*



# E2850B/E1650/E1250B Remixing Transfer Vehicle

## Variable Speed Conveyor

- Discharge conveyor speed adjusts with the speed of the storage elevator
- Reduces chain wear
- Reduces segregation by carrying larger volume of material at lower RPM vs. low volume at higher RPM



# E2850B/E1650/E1250B Remixing Transfer Vehicle

## High Abrasion Conveyor Wear Plate

- High abrasion wear plate located below conveyor foot shaft
- Chromium Carbide



*Engineered Innovation.*





# E2850B/E1650/E1250B Remixing Transfer Vehicle

## Conveyor Clean-Out

- Hydraulic, full-width drop-down floor
- Simplifies clean-out and chain inspection



WEILER INNOVATION

*Engineered Innovation.*



# E2850B/E1650/E1250B Remixing Transfer Vehicle

## Conveyor Control Station

- Located at rear of machine
- Ground level control of storage and discharge conveyor chains for cleanout
- Ground level control of discharge conveyor for raising and placing paver hopper insert



WEILER INNOVATION

Engineered Innovation.



# E2850B/E1650 Remixing Transfer Vehicle

## Fume Extraction

- Automatic, hydraulic front extraction tube
- Manual rear extraction tube easily reached from the operator platform



WEILER INNOVATION

Engineered Innovation.

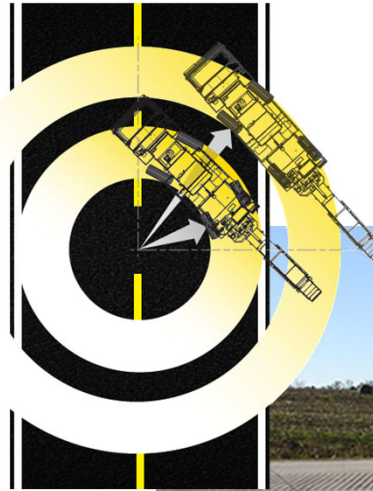




# E2850B/E1650 Remixing Transfer Vehicle

## Powertrain and Rear Steer

- Wheel motors and planetary drives
- 4-wheel drive
- Shift-on-the fly 3 speed hydrostatic drive
- Rear steer option reduces inside turning radius from 30' to 14' (16' on E1650)
- Manual control rear steer for coordinated or crab steering
- Rear steering angle returns to center upon command



**WEILER INNOVATION**

*Engineered Innovation.*



# E2850B/E1650/E1250B Remixing Transfer Vehicle

## Operator's Platform

- Hydraulically shifts 18" (24" on E1650 and E1250B) in either direction for increased visibility
- Control console pivots from left-to-right



WEILER INNOVATION

Engineered Innovation.



# E2850B Remixing Transfer Vehicle

## Engine and Access

- Cat C7.1 Tier 4 w/300 HP
- Cat C7.1 Tier 4 w/250 HP in E1650 and E1250B
- 150 gallon (568 L) fuel capacity (130-E1250B, 110-E1650)
- 100 gallon (379 L) hydraulic oil capacity (86-E1250B, 80-E1650)
- Large hood easily opens and closes with pressurized supports
- 2 large service doors provide access to pumps and radiator



*Engineered Innovation.*

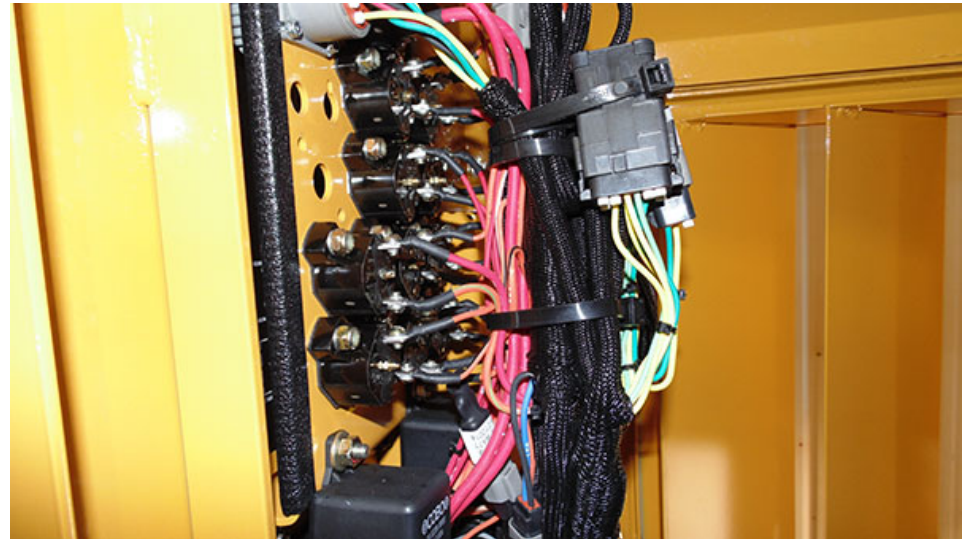




# E2850B/E1650/E1250B Remixing Transfer Vehicle

## Simplified Service

- Numbered and color coded wires
- Braided electrical harnesses
- Uniform hose routing



WEILER INNOVATION

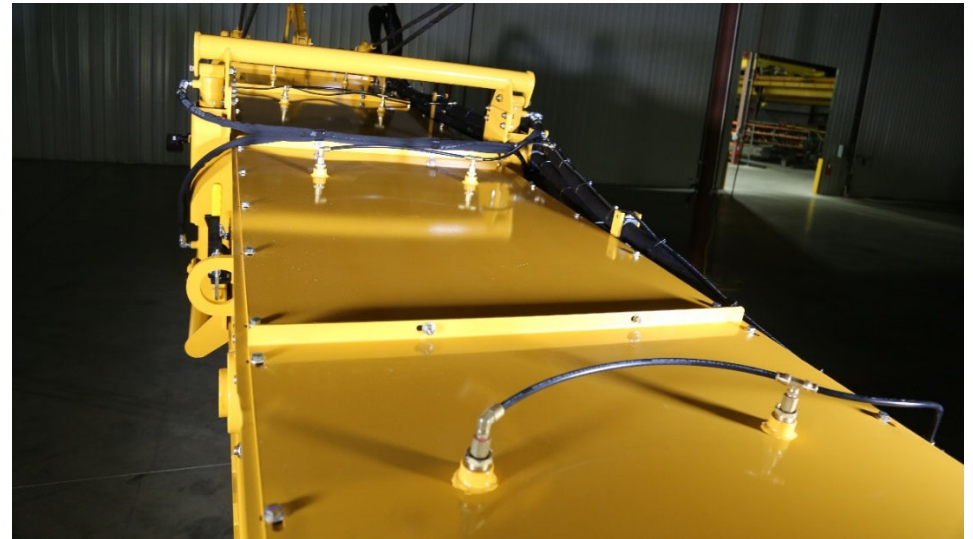
*Engineered Innovation.*



# E2850B/E1650/E1250B Remixing Transfer Vehicle

## Internal Spray Down

- Internal spray nozzles for augers, chains, sprockets and storage hopper
- Includes separate 32 gallon spray down tank



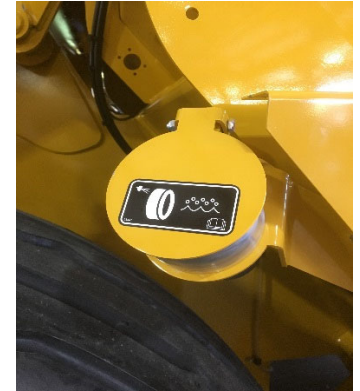
*Engineered Innovation.*



# E2850B/E1650/E1250B Remixing Transfer Vehicle

## Tire Spray Down

- 2 spray nozzles for each tire & 1 nozzle for each castor wheel
- Programmable spray interval
- Requires internal spray down system



WEILER INNOVATION

Engineered Innovation.





# E2850B/E1650/E1250B Remixing Transfer Vehicle

## Auto Greaser

- Automatically greases 45 locations
- Data logger available



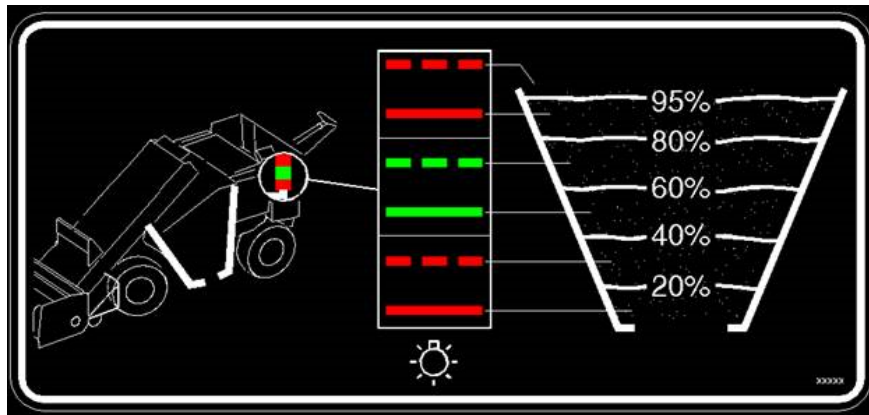
*Engineered Innovation.*



# E2850B/E1650 Remixing Transfer Vehicle

## Storage Hopper Management System

- Indicates level of material in storage hopper
- Operator sees % readout on controller



WEILER INNOVATION

Engineered Innovation.



# E2850B/E1650/E1250B Remixing Transfer Vehicle

## Distance Control System

- Maintains a set distance between the transfer vehicle and paver
- Engage from a stopped or moving position
- Propel lever/potentiometer controls distance
- “Time Out” safety feature



*Engineered Innovation.*





# E2850B/E1650/E1250B Remixing Transfer Vehicle

## Paver Hopper Management

- Manages output of elevator and conveyor via sonic sensor that reads the pile in the hopper insert



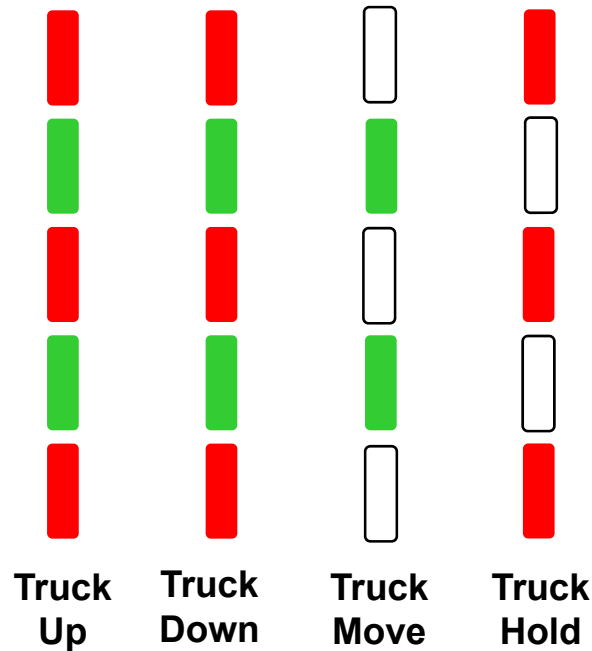
*Engineered Innovation.*



# E2850B/E1650/E1250B Remixing Transfer Vehicle

## Truck Signal Lights

- Feature 5 patterned LED lights to communicate with trucks
- Truck up, truck down, truck move and truck hold
- Top and bottom running lights continuously on
- Controls located on operator platform and both dump hopper control stations



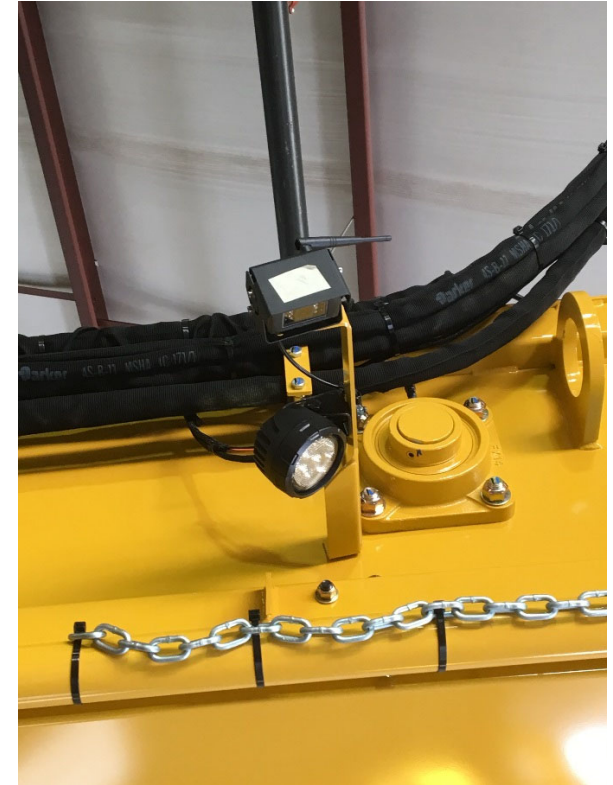
*Engineered Innovation.*



# E2850B/E1650/E1250B Remixing Transfer Vehicle

## Camera System

- Features 3 wireless cameras (4 on the E1650 and E1250B)
- Monitor mounts above steering wheel with multiple viewing options
- Lockable storage for monitor



*Engineered Innovation.*



# E2850B/E1650/E1250B Remixing Transfer Vehicle

## Paver Hopper Insert

- 13 ton (11.8 metric ton) universal paver hopper insert
- 5 ton (4.5 metric ton) and 8 ton (7.3 metric ton) extensions
- Adjustable to various paver conveyor styles



*Engineered Innovation.*







*Engineered Innovation.*

