



57th Annual PAPA Conference

January 18, 2017

Mark A. Moyer
Regional QC Manager

New Enterprise Stone & Lime Co., Inc.

***ECMS #93255 District 2-0**

***SR 0322 Sec. 156 Centre County**

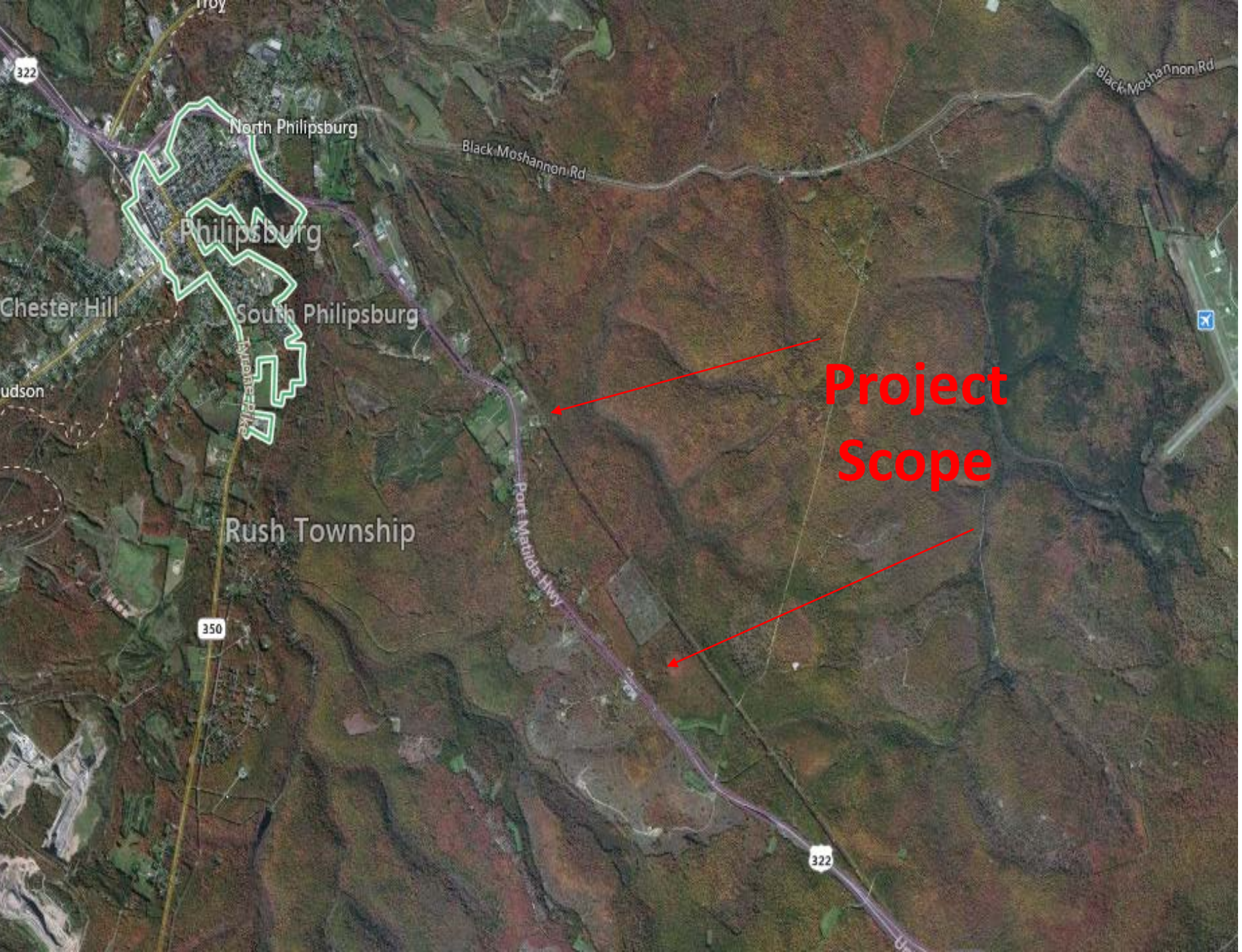
Mixes:

9.5mm “H” 100N (76-22) baseline

Approximately 5000 tons

**9.5mm “H” 100N (StellarFlex
GTRH76-22) pilot**

Approximately 1200 tons



**Project
Scope**

History & Highlights of Project:

- Project was let on 8/27/15
- Test Strip placed on 4/27/16 on Red Oak Lane (Township road) adjacent to project
- 2 days of production: 5/4 & 5/6/16
- Standard 409 material, not PWT
- Longitudinal Joint Incentive/Disincentive specification
- Minimum Pbe specification
- Did not have a Ride Specification









REALITY of this project:

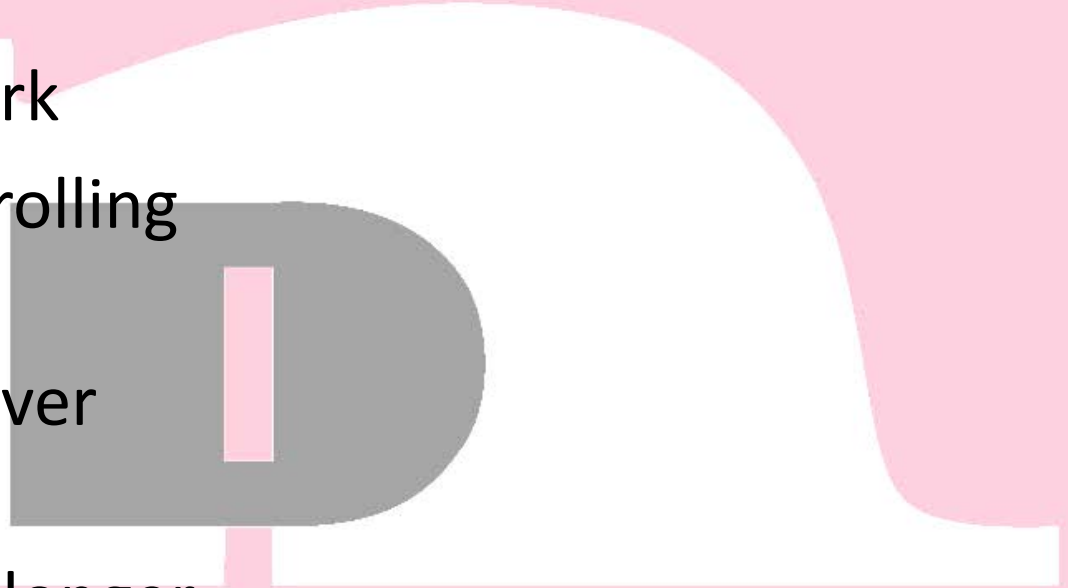
- Lot 1-100% pay (standard) *103% (if PWT)
- Lot 2-100% pay (standard) *104% (if PWT)
- Joint Density (full bonus)
- StellarFlex GTRH liquid was tested by Penn Dot QA Team, it met all criteria of PG 76-22

STATE POLICE



Pro's and Con's

- PRO'S
- Minimal handwork
- No difference in rolling pattern
- Went through paver without a hitch
- Stayed workable longer than baseline mix



Pro's and Con's

- PRO'S

- Minimal handwork
- No difference in rolling pattern
- Went through paver without a hitch
- Stayed workable longer than baseline mix

- CON'S

- Took 0.1% more asphalt for volumetrics



Acknowledgements:

Randy Strait, Chief Plant Technician

Bob Flood, Area Paving Manager

Plant operations

Tom Bennert, Ph.D. - Rutgers University

Axeon Speciality Products



Questions?